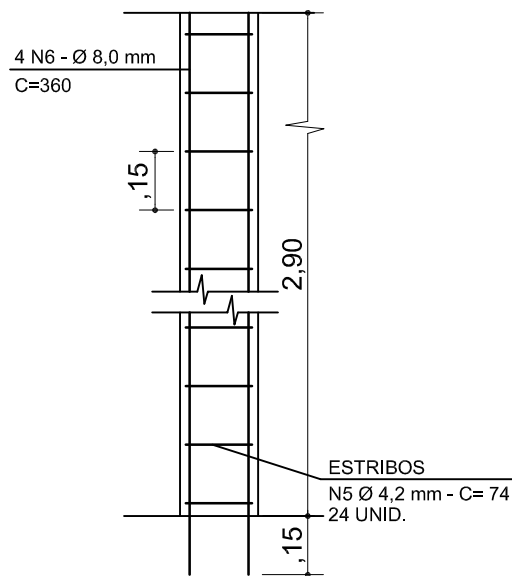
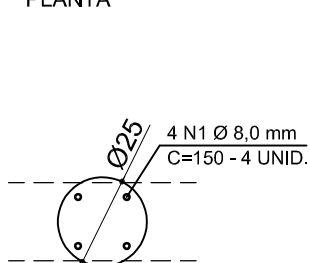


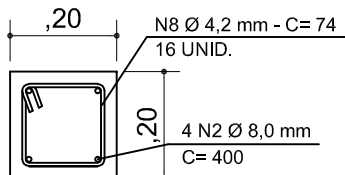
BASE/LAJE SUPERIOR
PLANTA



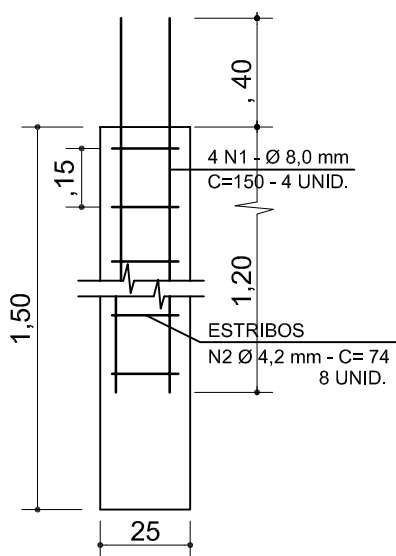
COLUNA CENTRAL



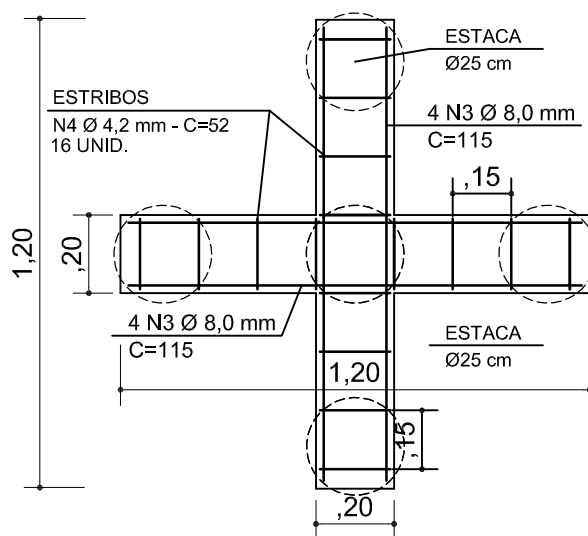
CORTE - VIGA BALDRAME



CORTE - COLUNA CENTRAL



CORTE - ESTACAS - 5 UNID.



VIGA BALDRAME
PLANTA

UTILIZAÇÃO		DESCRIPTIVO/FERRAGEM	TOTAL
ESTRIBOS	N2 - N4 - N5	FERRO CA60 - 4.2 mm (3/16")	3.5 BARRAS/4.58 Kg.
ESTACAS/BALDRAME/COLUNA	N1 - N3 - N6	FERRO CA50 - 8.0 mm (5/16")	4 BARRAS/18.95 Kg.
BASE DE APOIO	N7	FERRO CA60 - 5.0 mm (3/15")	1.5 BARRAS/2.78 Kg.

NOTA: PARA CALCULO DA PROFUNDIDADE DAS ESTACAS - OBSERVAR RESISTÊNCIA DO SOLO.